

# MARCKDAEL

VERLICHTING VAN DIJCK



**PRICELIST LAMPSHADES**

**2023-2024**

## FABRIC SAMPLES A

### LINEN

### CAT 04

LINEN COLOR 22



LINEN 25 PEPPER



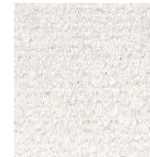
LINEN 12 OLD GREY



### ALPINE

### CAT 05

ALPINE 01



ALPINE 05



### LINDA

### CAT 03

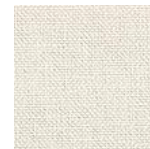
LINDA NEIGE COTTON



LINDA ECRU



LINDA GRIS CLAIR



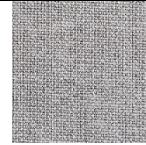
LINDA SMOKE



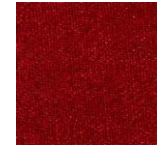
www.Bcosy.be

**LINDA** **CAT 03**

LINDA IRON GREY



LINDA RUBY



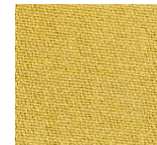
LINDA CHILE COTTON



LINDA SERANDITE



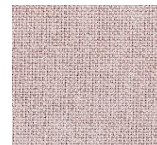
LINDA CORN



LINDA MOSTERD



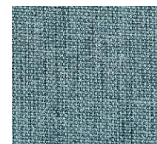
LINDA MAUVE



LINDA MINERAL



LINDA OCEAN



LINDA NIGHTSHADOW



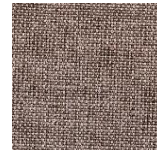
[www.Bcosy.be](http://www.Bcosy.be)

**LINDA** **CAT 03**

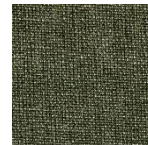
LINDA CLAY



LINDA COCOA + WIT



LINDA MOSSGREEN



LINDA MARRON FONCE

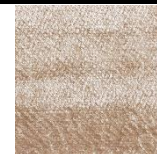


LINDA CARBONE



**SAN REMO** **CAT 05**

SAN REMO 03 VENUS ON TAUPE



SAN REMO 09 OKER ON GOLD



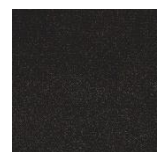
SAN REMO 11 OLIVE ON GOLD



SAN REMO 10 OCEAN ON GOLD



SAN REMO 16 BLACK ON GOLD



www.Bcosy.be

**SAN REMO**

**CAT 05**

SAN REMO 04 OLD PINK ON GOLD



SAN REMO 14 DARK BLUE ON GOLD



**FABRIC SAMPLE WITH PRINT**

**CAT 05**

CHARLY BLUE



CHARLY CREME



CHARLY RED



MONKEY VELVET



CORAL VELVET



XAVI BLUE



PRINCE VELVET



RUBEN VELVET



*www.Bcosy.be*



## FABRIC SAMPLES B

### TURDA

### CAT 02

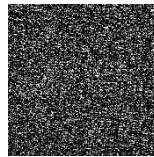
TURDA 77



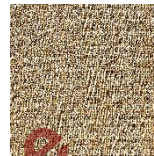
TURDA 82



TURDA 20



TURDA 33



### FEATHER

### CAT 04

FEATHER 77



FEATHER 56



FEATHER 05



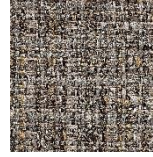
www.Bcosy.be

## FABRIC SAMPLES B

CHRONO

CAT 02

CHRONO BROWN 15



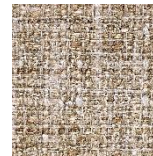
CHRONO ESPRESSO 123



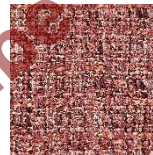
CHRONO CLAY 84



CHRONO MOKKA 13



CHRONO CORAL 95



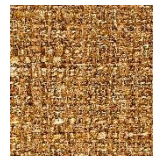
CHRONO NIAGARA 158



CHRONO HYACINT



CHRONO CINNAMON



CHRONO LIGHT GREY



www.Bcosy.be

## FABRIC SAMPLES B

### PALAZANI

### CAT 03

PALAZANI 10



PALAZANI 130



PALAZANI 101



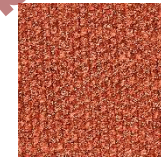
### MINOZZI

### CAT 03

MINOZZI 01



MINOZZI 101



### CHINZ

### CAT 01

CHINZ 01



CHINZ 02



CHINZ 11



CHINZ 20



CHINZ 77



www.Bcosy.be



## FABRIC SAMPLES B

### COTTON

### CAT 01

COTTON 1620



COTTON 1657



COTTON 1677



COTTON 1681



COTTON 1683



### CAMELOT

### CAT 01

CAMELOT 77 BRUIN



CAMELOT 82 TAUPE



CAMELOT 02 CREME



CAMELOT 20 ZWART



www.Bcosy.be

## FABRIC SAMPLES B

### Linnen

cat 02

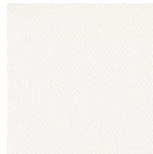
VLASLINNEN



VLASLINNEN LICHT



LINNEN 1202



LINNEN 1250



### FINNO

CAT 02

FINNO 4305



FINNO 4311



FINNO 4377



FINNO 4383



www.Bcosy.be

# SALES PRICELIST LAMPSHADES 2023-2024

# FABRIC SAMPLES A

A= diameter bottom B= diameter top C= height (measured straight)

A	B	C	SALES PRICE	SALES PRICE	SALES PRICE
<b>HALF</b>			<b>3</b>	<b>4</b>	<b>5</b>
15.11.11			20,90	20,90	24,20
20.15.12			23,10	23,10	30,80
25.19.14			28,60	28,60	37,40
30.25.15			33,00	33,00	44,00
35.30.18			58,30	58,30	63,80
38.28.20			58,30	58,30	70,40
40.32.22			63,80	63,80	77,00
45.35.23			70,40	70,40	81,40
50.40.26			92,40	92,40	114,40
55.45.28			110,00	110,00	125,40
60.50.30	125,40	125,40	156,20		
70.50.30	176,00	176,00	202,40		
80.60.35	204,60	204,60	239,80		

A	B	C	SALES PRICE	SALES PRICE	SALES PRICE
<b>RECHTHOEK ROND</b>			<b>3</b>	<b>4</b>	<b>5</b>
20.18.12			42,90	42,90	50,60
25.22.13			46,20	46,20	55,00
30.26.16			52,80	52,80	63,80
35.30.19			64,90	64,90	79,20
40.33.21			85,80	85,80	110,00
45.40.25			90,20	90,20	121,00
50.44.28			116,60	116,60	149,60

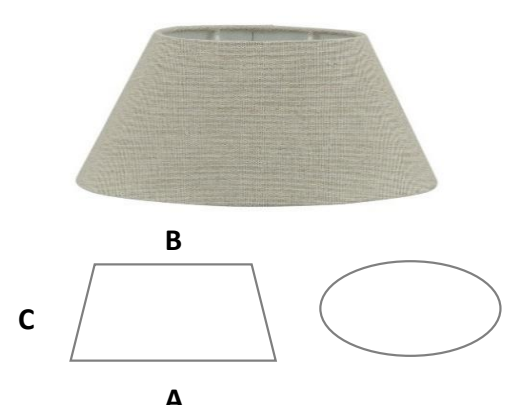
A	B	C	SALES PRICE	SALES PRICE	SALES PRICE
<b>VIERKANT</b>			<b>3</b>	<b>4</b>	<b>5</b>
15.08.12			27,50	27,50	35,20
20.10.13			39,60	39,60	46,20
25.13.15			52,80	52,80	57,20
30.15.18			63,80	63,80	68,20
35.20.20			77,00	77,00	90,20
40.22.28			99,00	99,00	114,40
45.26.32			138,60	138,60	165,00
50.35.45	156,20	156,20	195,80		

**SALES PRICELIST LAMPSHADES 2023-2024**

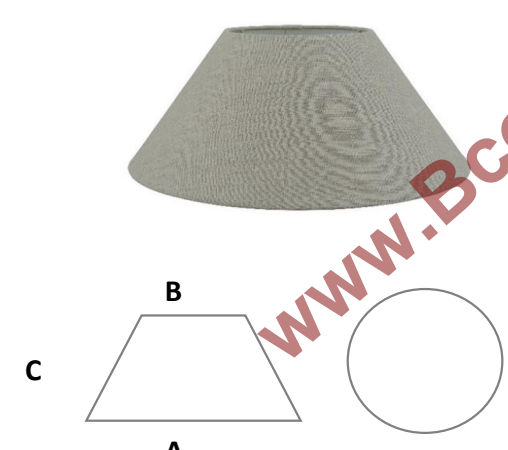
**FABRIC SAMPLES A**

**A= diameter bottom B= diameter top C= height (measured straight)**

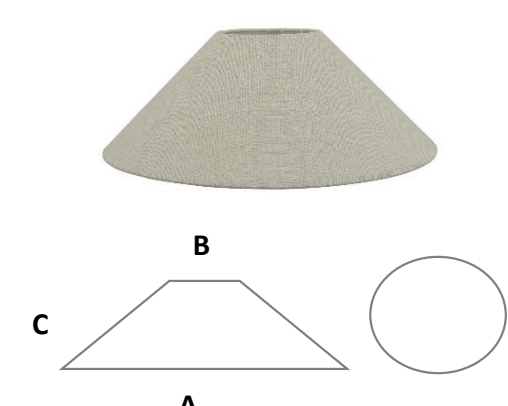
A	B	C	SALES PRICE	SALES PRICE	SALES PRICE
<b>OVAAL</b>			<b>3</b>	<b>4</b>	<b>5</b>
20.12.11			27,50	27,50	33,00
25.15.12			35,20	35,20	41,80
30.17.15			44,00	44,00	46,20
35.20.17			50,60	50,60	57,20
40.33.20			68,20	68,20	79,20
45.35.22			88,00	88,00	99,00
50.38.28			99,00	99,00	101,20



A	B	C	SALES PRICE	SALES PRICE	SALES PRICE
<b>SCHUIN</b>			<b>3</b>	<b>4</b>	<b>5</b>
13.07.11	<b>KLEM - PINCE</b>		18,70	18,70	23,10
15.07.11	<b>KLEM - PINCE</b>		17,60	19,80	26,40
20.09.11			24,20	24,20	28,60
25.10.13			28,60	28,60	30,80
30.13.14			35,20	35,20	44,00
35.13.14			41,80	41,80	50,60
40.15.16			55,00	55,00	59,40
45.12.18			63,80	63,80	64,90
50.18.21			70,40	70,40	77,00
55.20.25			79,20	79,20	92,40
60.22.28			99,00	99,00	103,40
65.27.28			121,00	121,00	136,40
70.28.32			139,70	139,70	143,00
75.20.25			151,80	151,80	154,00



A	B	C	SALES PRICE	SALES PRICE	SALES PRICE
<b>CHINEES</b>			<b>3</b>	<b>4</b>	<b>5</b>
30.10.12			33,00	33,00	39,60
38.12.13			41,80	41,80	52,80
45.12.13			55,00	55,00	66,00
50.13.14			63,80	63,80	72,60
55.15.16			73,70	73,70	88,00
60.15.23			99,00	99,00	101,20
65.15.23			90,20	90,20	107,80
70.15.24			132,00	132,00	138,60
80.20.26			242,00	242,00	290,40



**SALES PRICELIST LAMPSHADES 2023-2024**

**FABRIC SAMPLES A**

**A= diameter bottom B= diameter top C= height (measured straight)**

A B C		SALES PRICE	SALES PRICE	SALES PRICE
<b>CYLINDER</b>		<b>3</b>	<b>4</b>	<b>5</b>
15.15.15		30,80	30,80	37,40
15.15.20		35,20	35,20	39,60
15.15.25		41,80	41,80	46,20
15.15.30		57,20	57,20	63,80
20.20.15		35,20	35,20	46,20
20.20.20		41,80	41,80	48,40
20.20.25		44,00	44,00	48,40
20.20.30		46,20	46,20	55,00
25.25.15		41,80	41,80	50,60
25.25.20		50,60	50,60	59,40
25.25.25	52,80	52,80	63,80	
25.25.30	57,20	57,20	66,00	
30.30.20		57,20	57,20	68,20
30.30.25		63,80	63,80	70,40
30.30.30		70,40	70,40	77,00
30.30.35		77,00	77,00	83,60
30.30.40		83,60	83,60	92,40
35.35.20		66,00	66,00	74,80
35.35.25		70,40	70,40	81,40
35.35.30		77,00	77,00	85,80
35.35.35		83,60	83,60	92,40
35.35.40		90,20	90,20	101,20
40.40.20		77,00	77,00	85,80
40.40.25		83,60	83,60	92,40
40.40.30		90,20	90,20	96,80
40.40.35		96,80	96,80	105,60
40.40.40		103,40	103,40	112,20
45.45.25		90,20	90,20	107,80
45.45.30		99,00	99,00	114,40
45.45.35		99,00	99,00	125,40
45.45.40		114,40	114,40	129,80
50.50.20		94,60	94,60	107,80
50.50.25	99,00	99,00	114,40	
50.50.30	103,40	103,40	118,80	
50.50.35	114,40	114,40	135,30	
50.50.40	123,20	123,20	140,80	
50.50.45	132,00	132,00	151,80	
55.55.40	136,40	136,40	151,80	
55.55.50	171,60	171,60	195,80	



# SALES PRICELIST LAMPSHADES 2023-2024

# FABRIC SAMPLES A

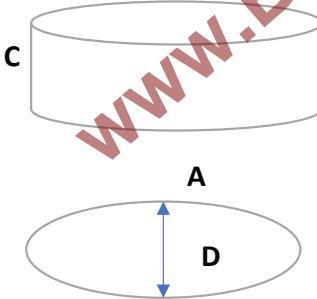
**A= diameter bottom B= diameter top C= height (measured straight)**

A	B	C	SALES PRICE	SALES PRICE	SALES PRICE
60.60.30			132,00	132,00	147,40
60.60.40			154,00	154,00	159,50
70.70.30			162,80	162,80	176,00
70.70.35			187,00	187,00	209,00
70.70.40			187,00	187,00	206,80
70.70.50			217,80	217,80	231,00
80.80.40			231,00	231,00	250,80
80.80.50			275,00	275,00	290,40
80.80.60			286,00	286,00	312,40
100.100.60			429,00	429,00	440,00



SALES PRICE:		BODEM CAT 2	
25 cm diam	24,50€	55 cm diam	49,50€
30 cm diam	34,00€	60 cm diam	51,00€
35 cm diam	37,50€	70 cm diam	67,50€
38 cm diam	37,50€	80 cm diam	98,00€
40 cm diam	38,50€	90 cm diam	104,50€
45 cm diam	45,50€	100 cm diam	130,00€
50 cm diam	47,50€		

A	B	C	D= DEPTH	SALES PRICE	SALES PRICE	SALES PRICE
<b>ELIPS</b>				<b>3</b>	<b>4</b>	<b>5</b>
30.30.16			20	44,00	44,00	48,40
35.35.18			22	50,60	50,60	57,20
40.40.20			28	57,20	57,20	66,00
45.45.25			28	68,20	68,20	79,20
50.50.25			32	72,60	72,60	85,80

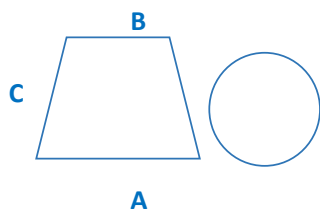


## SALES PRICELIST LAMPSHADES 2023-2024

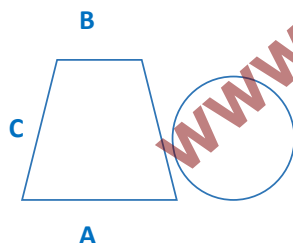
## FABRIC SAMPLES B

A= diameter bottom B= diameter top C= height (measured straight)

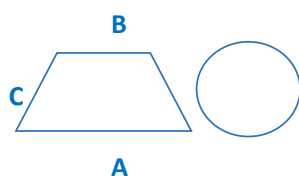
MODEL 10 BRIDGE	SALES PRICE	SALES PRICE	SALES PRICE
	Cat 1	Cat 2	Cat 3
<b>A*B*C</b>			
15*10*12	15,40	18,50	19,80
20*15*13	21,50	25,60	27,90
25*20*16	26,40	31,70	34,00
30*25*18	33,60	40,40	43,80
35*30*20	40,90	49,10	53,40
40*35*22	48,30	58,50	63,20
45*40*25	57,20	69,00	74,60
50*45*25	66,70	80,40	86,80
55*50*27	75,10	90,40	97,80
60*50*30	91,70	109,80	119,30
70*60*35	128,70	155,30	167,80
80*60*40	156,50	188,90	204,60
100*80*50	202,90	243,80	263,50



MODEL 11 DRUM	SALES PRICE	SALES PRICE	SALES PRICE
	Cat 1	Cat 2	Cat 3
<b>A*B*C*</b>			
20*15*13	21,50	25,60	27,90
25*18*14,5	26,40	31,70	34,00
30*20*17	33,60	40,40	43,80
35*25*19	40,90	49,10	53,40
40*30*21	48,30	58,50	63,20
45*35*23	57,20	69,00	74,60
50*40*25	66,70	80,40	86,80
55*45*27	82,10	98,90	107,20
60*50*30	98,90	118,50	128,50
70*55*33	128,20	152,20	165,00



MODEL 12 LUGANO	SALES PRICE	SALES PRICE	SALES PRICE
	Cat 1	Cat 2	Cat 3
<b>A*B*C</b>			
20*8*12	15,90	18,70	21,50
25*11*13,5	24,30	28,50	30,00
30*15*16	25,60	31,50	34,00
35*16*20	32,80	38,30	42,70
40*17,5*23	38,30	46,80	49,60
45*20*25	45,30	53,60	58,30
50*20*28	60,80	72,10	77,70
55*22*29	65,10	77,70	84,60
60*25*30	69,50	82,10	88,90

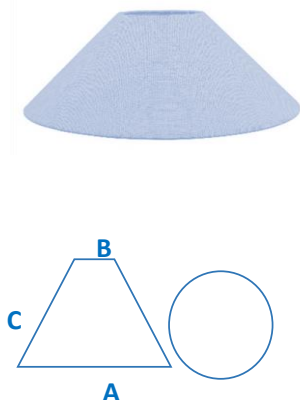


## SALES PRICELIST LAMPSHADES 2023-2024

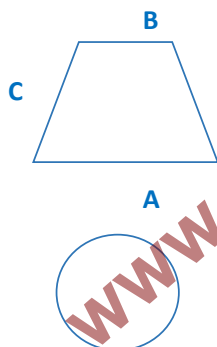
## FABRIC SAMPLES B

A= diameter bottom B= diameter top C= height (measured straight)

MODEL 13 PUNT		SALES PRICE	SALES PRICE	SALES PRICE
		Cat 1	Cat 2	Cat 3
<b>A*B*C</b>				
14*7*10,5	KLEM	12,80	15,10	16,20
15*8*11	KLEM	13,20	15,90	17,20
20*8*12		15,90	18,70	21,50
25*9*15		17,20	21,50	22,80
30*10*19		25,60	31,50	34,00
35*12,5*17		26,80	32,80	35,50
40*12,5*20		35,50	41,20	45,30
45*17,5*27		41,20	49,60	53,60
50*15*26		49,60	59,60	65,10
55*15*29		58,30	67,70	75,10
60*20*30		65,10	77,70	84,60
65*20*33		78,90	94,50	101,70
70*25*37		104,40	124,20	135,30



MODEL 14 RONDO		SALES PRICE	SALES PRICE	SALES PRICE
		Cat 1	Cat 2	Cat 3
<b>A*B*C</b>				
13*8*10	KLEM	11,50	13,90	14,90
15*10*10		15,40	18,50	19,80
20*10*15		18,70	22,30	24,30
25*12*18		24,90	29,70	32,30
30*15*22		35,80	43,00	46,60
35*17,5*25		40,90	49,10	53,20
40*20*28		46,80	56,20	60,80
45*22,5*31		53,60	64,90	70,20
50*25*34		67,70	81,50	88,10
55*25*37		73,80	88,40	96,10
60*30*38		82,30	98,90	107,20
65*30*41		101,70	121,80	132,50

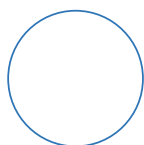
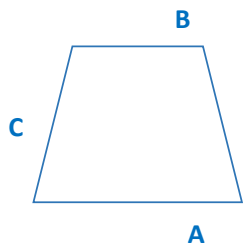


## SALES PRICELIST LAMPSHADES 2023-2024

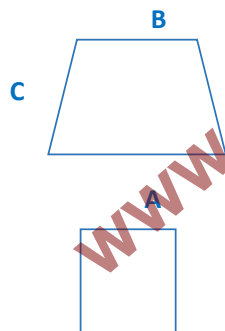
## FABRIC SAMPLES B

A= diameter bottom B= diameter top C= height (measured straight)

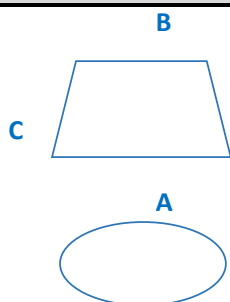
MODEL 15 EMPIRE		SALES PRICE	SALES PRICE	SALES PRICE
		Cat 1	Cat 2	Cat 3
<b>A*B*C</b>				
11*8*11	KLEM	10,30	12,30	13,40
12,5*10*12,5	KLEM	11,50	13,90	14,90
15*12,5*14		16,20	19,80	21,50
17,5*12,5*16		18,70	22,30	24,30
20*16*18		23,80	28,50	30,70
25*22*22		27,70	33,20	36,10
30*25*26		36,10	43,40	47,00
35*30*31		43,40	52,10	56,20
40*35*36		49,30	59,10	64,40
45*40*40		54,50	65,50	70,80
50*40*40		78,70	94,50	102,70
55*40*40		93,50	112,30	121,60
60*45*45		102,70	122,90	132,80
65*50*60		121,00	145,30	157,30
70*50*60		166,30	200,10	215,70
80*50*60		202,90	243,80	263,50
100*80*70		360,50	432,10	467,40



MODEL 16 NAPOLI		SALES PRICE	SALES PRICE	SALES PRICE
		Cat 1	Cat 2	Cat 3
<b>A*B*C</b>				
13*8*12		16,20	19,80	21,50
16*10*14		30,20	36,40	39,10
20*14*18		34,80	41,70	45,10
25*17*21		40,90	49,10	53,60
30*21*26		50,60	60,80	65,90
35*25*31		63,20	75,90	82,10
40*28*36		75,10	90,40	97,80
45*31*41		88,70	106,50	115,50



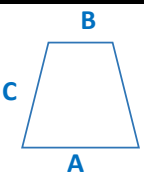

MODEL 17 OVAAL			SALES PRICE	SALES PRICE	SALES PRICE
			Cat 1	Cat 2	Cat 3
<b>A*B*C</b>	<b>A</b>	<b>B</b>			
	<b>DIEPTE</b>				
20*15*15	13	9	22,60	26,80	29,40
25*18*18	15	1	27,40	33,00	35,50
30*20*20	20	12	33,60	40,40	43,80
35*25*23	22	1	40,90	49,10	53,40
40*30*26	26	20	46,80	56,00	60,80
45*35*28	30	22	51,90	62,10	67,20
50*40*36	33	25	65,10	77,90	84,60
100*90*35	CAKE OVAAL		202,90	243,80	263,50


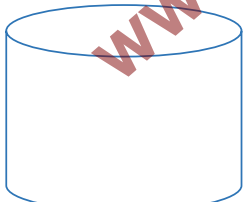
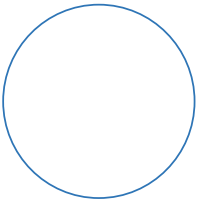


## SALES PRICELIST LAMPSHADES 2023-2024

## FABRIC SAMPLES B

A= diameter bottom B= diameter top C= height (measured straight)

MODEL TORINO		SALES PRICE	SALES PRICE	SALES PRICE
		Cat 1	Cat 2	Cat 3
<b>A*B*C</b>				
20*10*15		38,30	45,30	49,60
25*14*19		45,30	53,60	58,30
30*17*21		56,50	66,40	78,90
35*22*24		69,50	83,30	90,40
40*25*28		83,30	98,90	107,20
45*28*33		97,60	117,20	127,00
50*33*38		108,90	131,20	141,00

MODEL 18 CYLINDER		SALES PRICE	SALES PRICE	SALES PRICE
		Cat 1	Cat 2	Cat 3
<b>A*B*C</b>				
15*15*15		25,60	31,50	34,00
15*15*20		26,80	32,80	35,50
15*15*25		28,50	34,00	37,10
15*15*30		37,90	45,50	49,30
20*20*10		30,00	37,10	41,20
20*20*15		32,80	39,60	44,00
20*20*20		35,50	42,70	46,80
20*20*25		39,60	48,30	52,40
20*20*30		42,70	50,90	55,30
22*22*15		31,50	38,30	42,70
22*22*20		32,80	39,60	44,00
22*22*25		35,50	42,70	46,80
22*22*30		39,60	48,30	52,40
25*25*15		37,10	45,30	49,60
25*25*20		39,60	48,30	52,40
25*25*25		41,20	49,60	53,60
25*25*30		44,00	53,60	59,60
30*30*15		34,00	41,20	45,30
30*30*20		42,70	50,90	56,50
30*30*25		45,30	55,30	60,80
30*30*30		49,60	59,60	65,10
30*30*35		53,60	65,10	70,80
30*30*40		54,70	65,70	71,00
35*35*20		44,00	53,60	58,30
35*35*25		48,30	58,30	63,80
35*35*30		53,60	65,10	70,80
35*35*35		58,30	70,80	76,40
35*35*40		63,80	76,40	83,30
37,5*37,5*25		52,40	63,80	67,70

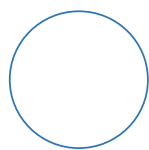
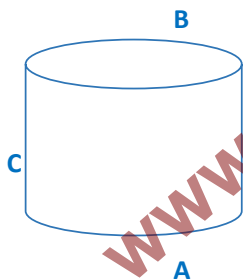


## SALES PRICELIST LAMPSHADES 2023-2024

## FABRIC SAMPLES B

A= diameter bottom B= diameter top C= height (measured straight)

40*40*20	48,30	58,30	63,80
40*40*25	55,30	66,40	72,10
40*40*30	62,10	75,10	82,10
40*40*35	67,70	82,10	88,90
40*40*40	75,10	90,40	98,90
40*40*45	82,10	98,90	107,20
45*45*20	72,10	87,60	96,10
45*45*25	76,40	91,90	100,20
45*45*30	80,40	97,60	105,70
45*45*35	84,60	101,70	110,10
45*45*40	91,90	110,10	120,00
45*45*45	96,10	115,70	125,70
50*50*30	100,20	120,30	131,20
50*50*35	107,20	128,70	139,50
50*50*40	112,70	135,30	146,60
50*50*45	120,00	144,00	156,50
50*50*50	127,00	152,20	165,00
50*50*55	134,00	160,80	174,60
55*55*30	108,50	131,20	142,50
55*55*35	117,40	141,00	152,20
55*55*40	126,40	152,20	165,00
55*55*45	135,30	163,40	177,40
55*55*50	144,60	173,40	187,60
55*55*55	153,50	184,60	200,10
55*55*60	162,40	195,90	212,70
55*55*65	171,60	205,80	222,70
60*60*30	124,20	149,70	163,40
60*60*35	129,70	156,50	169,10
60*60*40	135,30	163,40	176,50
60*60*50	149,70	180,30	194,60
60*60*55	157,80	190,20	205,80
65*65*35	135,30	163,40	177,80
65*65*40	145,30	174,60	188,90
65*65*45	153,70	184,60	200,10
65*65*50	163,40	197,10	214,20
65*65*55	172,10	207,10	223,90
65*65*60	180,30	217,00	235,40
65*65*65	190,20	228,20	246,70
65*65*70	200,10	241,00	260,70
70*70*30	141,00	169,10	182,90
70*70*35	146,60	176,50	190,20
70*70*40	153,70	184,60	200,10
70*70*45	160,80	193,10	208,60
70*70*50	167,80	202,90	219,90
70*70*55	174,60	210,10	226,90
70*70*60	183,30	219,90	238,20

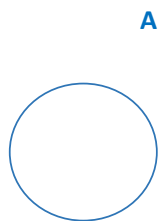
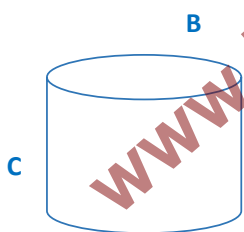


## SALES PRICELIST LAMPSHADES 2023-2024

## FABRIC SAMPLES B

A= diameter bottom B= diameter top C= height (measured straight)

70*70*65	190,20	228,20	246,70
75*75*35	148,10	177,80	193,10
75*75*40	152,20	183,30	198,90
75*75*45	162,10	194,60	211,40
75*75*50	169,10	202,70	219,90
75*75*55	174,60	211,40	228,20
75*75*60	185,90	223,90	242,30
75*75*65	191,40	231,00	250,70
80*80*35	149,70	180,30	195,90
80*80*40	156,50	188,90	204,60
80*80*45	163,40	197,10	214,20
80*80*50	174,60	210,10	226,90
80*80*55	176,50	211,40	228,20
80*80*60	186,90	225,20	243,80
90*90*50	270,30	325,20	352,00
90*90*55	281,60	337,70	366,00
90*90*60	292,80	352,00	380,30
90*90*65	304,10	366,00	396,00
90*90*70	315,60	378,80	409,60
90*90*75	326,70	394,10	426,60
90*90*80	337,70	405,40	437,70
100*100*60	304,10	365,00	394,10
100*100*65	315,60	378,60	408,90
100*100*70	326,70	392,10	423,40
100*100*75	337,70	405,40	438,10
100*100*80	349,20	419,20	452,60
100*100*85	360,50	432,40	467,10
100*100*90	371,70	446,20	481,90
110*110*80	540,60	648,60	700,60
110*110*85	562,80	675,40	729,70
110*110*90	585,50	702,70	758,80
110*110*100	630,40	756,70	817,30
110*110*110	653,10	783,90	846,60
110*110*120	675,40	810,70	875,70
120*120*80	698,00	837,70	905,10
120*120*85	731,80	878,30	948,70
120*120*90	765,60	918,80	992,50
120*120*95	799,40	959,40	1036,50
130*130*95	844,30	1013,00	1097,40
140*140*95	866,80	1040,30	1123,70
150*150*95	878,30	1053,80	1138,20
160*160*95	923,20	1107,60	1196,50
180*180*95	945,60	1134,80	1225,80

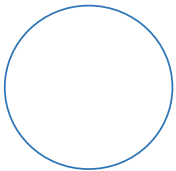


## SALES PRICELIST LAMPSHADES 2023-2024

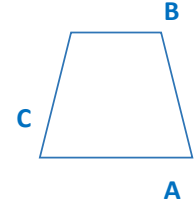

## FABRIC SAMPLES B

A= diameter bottom B= diameter top C= height (measured straight)



BODEM ROND	SALES PRICE	SALES PRICE	SALES PRICE
	Cat 1	Cat 2	Cat 3
DIAM 20	11,50	14,40	15,90
DIAM 30	14,40	17,20	18,70
DIAM 35	17,20	20,00	21,50
DIAM 37,5	18,70	22,80	24,30
DIAM 40	21,50	25,60	26,80
DIAM 45	22,80	28,50	30,00
DIAM 50	28,50	34,00	35,50
DIAM 55	30,00	35,50	39,60
DIAM 60	32,80	38,30	42,70
DIAM 70	37,10	44,00	48,30
DIAM 75	55,30	66,40	70,80
DIAM 80	59,60	70,80	77,70
DIAM 90	63,80	76,40	83,30
DIAM 100	67,70	82,10	88,90



RECHTHOEK SCHERPE HOEKEN	SALES PRICE	SALES PRICE	SALES PRICE
	Cat 1	Cat 2	Cat 3
A * B * C			
A			
B			
DIEPTE			
20*14*16	42,70	45,30	49,60
25*18*19	45,30	53,60	58,30
30*20*23	56,50	66,40	78,90
35*22*25	69,50	83,30	90,40
40*25*29	83,30	98,90	107,20
45*30*33	97,60	117,20	127,00

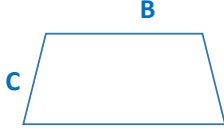
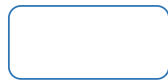
CAKELAMP	SALES PRICE	SALES PRICE	SALES PRICE
	Cat 1	Cat 2	Cat 3
A * B * C			
A			
B			
DIEPTE			
100*90*35	211,40	253,50	276,00
135*125*35	273,10	326,70	354,80
165*150*35	422,20	506,60	549,10

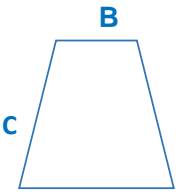
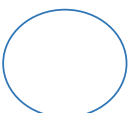



## SALES PRICELIST LAMPSHADES 2023-2024

## FABRIC SAMPLES B

A= diameter bottom B= diameter top C= height (measured straight)

RECHTHOEK RONDE HOEKEN		SALES PRICE	SALES PRICE	SALES PRICE
		Cat 1	Cat 2	Cat 3
<b>A*B*C</b>				
20*16*13,5		42,70	45,30	49,60
25*20*14		45,30	53,60	58,30
30*25*16		56,50	66,40	78,90
40*32*21		69,50	83,30	90,40
50*42*28		83,30	98,90	107,20
		97,60	117,20	127,00


BOLOGNA		SALES PRICE	SALES PRICE	SALES PRICE
		Cat 1	Cat 2	Cat 3
<b>A*B*C</b>				
20*12,5*14,5		23,60	29,20	31,70
25*15*17		30,20	36,40	39,60
30*17,5*20		41,20	49,60	53,60
35*20*24		52,40	63,80	69,50
40*25*26		63,80	76,40	82,80
45*30*31		72,10	86,60	93,80
50*35*34		82,80	99,90	108,90
55*40*40		96,10	115,20	124,90
60*40*45		111,90	134,00	145,30



MILANO		SALES PRICE	SALES PRICE	SALES PRICE
		Cat 1	Cat 2	Cat 3
<b>A*B*C</b>	<b>DIEPTE</b>			
20*20*15	10	49,60	59,60	63,80
25*25*17,5	12,5	55,30	66,40	70,80
30*30*30	15	60,80	72,10	78,90
35*35*22,5	17,5	66,40	78,90	86,40
40*40*25	20	78,90	94,50	101,70
45*45*27,5	22,5	93,20	111,40	121,30
50*50*30	25	108,90	131,20	141,00
50*50*50	15	221,40	266,30	287,10
80*80*30	30	315,60	378,80	410,90
100*100*30	30	337,70	405,40	439,30
100*100*35	40	360,50	433,70	468,90
110*100*25	30	371,70	446,40	484,20
120*100*30	30	360,50	433,70	468,90
120*100*30	40	405,40	487,20	527,80
150*150*30	30	473,00	568,70	615,10
180*180*30	30	608,00	730,50	790,90

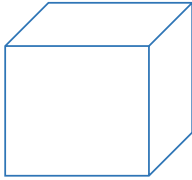

## SALES PRICELIST LAMPSHADES 2023-2024

## FABRIC SAMPLES B

A= diameter bottom B= diameter top C= height (measured straight)

BODEM MILANO		SALES PRICE	SALES PRICE	SALES PRICE
		Cat 1	Cat 2	Cat 3
100		45,30	55,30	59,60
110		73,40	87,60	94,50
120		82,10	98,90	105,70
150		135,30	163,40	176,50
200		157,80	190,20	205,80

MILANO RONDE HOEKEN		SALES PRICE	SALES PRICE	SALES PRICE	
		Cat 1	Cat 2	Cat 3	
<b>A*B*C</b>					
20*10*15	B	49,60	59,60	63,80	
25*12,5*17,5		55,30	66,40	70,80	
30*15*30		60,80	72,10	78,90	
35*17,5*22,5		C	66,40	78,90	86,40
40*20*25			78,90	94,50	101,70
45*22,5*27,5			93,20	111,40	121,30
50*25*30		A	108,90	131,20	141,00
50*15*50			221,40	266,30	287,10
80*30*30		315,60	378,80	410,90	
100*30*30		337,70	405,40	439,30	
100*40*35		360,50	433,70	468,90	
110*30*25		371,70	446,40	484,20	
120*30*30		360,50	433,70	468,90	
120*40*30		405,40	487,20	527,80	
150*30*30		473,00	568,70	615,10	
180*30*30		608,00	730,50	790,90	

KUBUS		SALES PRICE	SALES PRICE	SALES PRICE	
		Cat 1	Cat 2	Cat 3	
<b>A*B*C</b>	B				
20*20*20		46,80	56,20	60,80	
20*20*25		52,40	62,90	68,30	
20*20*30		59,60	71,30	77,40	
25*25*20		55,30	66,20	71,50	
25*25*25		60,80	73,10	78,90	
25*25*30		66,40	79,70	86,40	
30*30*25		A	70,80	84,80	91,90
30*30*30			73,40	88,10	95,30
30*30*40			80,40	96,60	104,70
35*35*20			67,70	81,20	88,10
35*35*30	77,70		93,20	100,90	
35*35*40	86,40		103,40	112,10	
40*40*20	82,10		98,30	106,50	
40*40*25	86,40		103,40	112,10	
40*40*30		90,40	108,30	117,40	

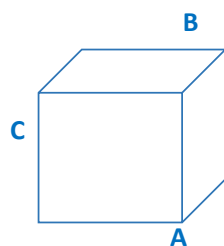


## SALES PRICELIST LAMPSHADES 2023-2024

## FABRIC SAMPLES B

A= diameter bottom B= diameter top C= height (measured straight)

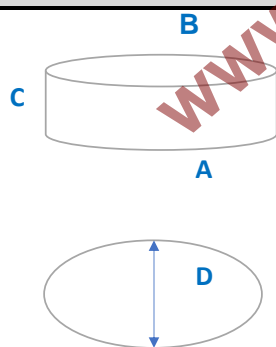
40*40*40		100,20	120,30	130,20
45*45*25		100,20	120,30	130,20
45*45*30		104,40	125,40	135,90
45*45*40		112,70	135,30	146,60
50*50*20		129,70	155,50	168,50
50*50*30		142,50	171,00	185,40
50*50*40		156,50	187,60	203,50
50*50*50		169,10	202,70	219,50
60*60*30		185,90	223,10	241,80
60*60*40		202,90	243,50	263,70
60*60*50		221,40	265,50	287,70
70*70*30		270,30	324,50	351,50
70*70*40		315,60	378,60	410,00
70*70*50		360,50	432,40	468,30
70*70*60		405,40	486,60	527,00



BODEM KUBUS	SALES PRICE		
	Cat 1	Cat 2	Cat 3
25	19,80	28,50	30,00
30	28,50	34,00	35,50
40	37,10	44,00	48,30
50	45,30	55,30	55,30
60	55,30	66,40	70,80
70	63,80	76,40	83,30



ELIPS	SALES PRICE		
	Cat 1	Cat 2	Cat 3
A*B*C D = DIEPTE			
20*20*15 11	31,90	37,10	40,90
25*25*20 12,5	35,80	42,20	46,00
30*30*20 15,5	42,20	49,80	53,60
35*35*22,5 17,5	50,60	60,80	65,90
40*40*25 20,5	58,70	67,70	74,10
45*45*25 26,5	63,80	75,30	81,70
50*50*30 30	70,60	77,90	87,20
60*60*30 30	78,00	80,40	90,60



FRAMONA SERIE	SALES PRICE		
	Cat 1	Cat 2	Cat 3
FRAMONA TABLELAMP 20*35	155,70	155,70	155,70
FRAMONA TABLELAMP 30*60	182,50	182,50	182,50
FRAMONA FLOORLAMP 50*170	386,70	386,70	386,70
FRAMONA PENDANT LAMP 30*35	146,80	146,80	146,80
FRAMONA PENDANT LAMP 50*35	224,60	224,60	224,60
FRAMONA PENDANT LAMP 60*40	270,60	270,60	270,60

